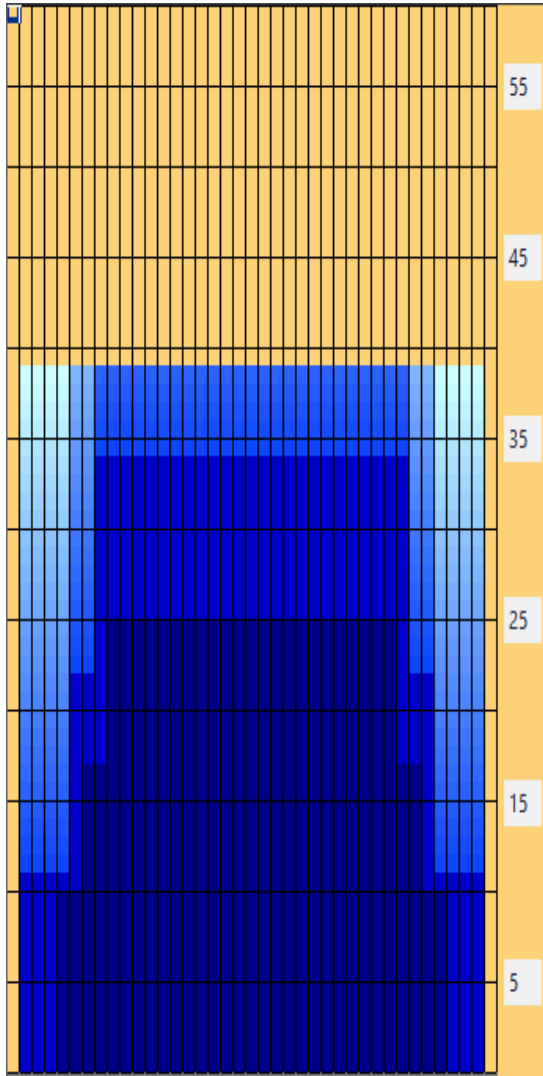




# ELITE BOWLERS TOUR

## Venus 39'



EBT Classification: ***Planet Pattern***

Pattern Volume: ***24.95mL @ 50µL*** Ratio: ***4.13 to 1***

Design Year: ***2016***

Description: Average length quasi-sport pattern

Characteristics: Symmetrical medium volume oil pattern with semi-long backends

Recommended Attack Area: First to second arrow

Recommended Delivery Speed: Moderately Fast  
Equipment: Medium aggressive balls with length

Scoring Potential: Medium

Difficulty: Moderately difficult

The EBT Venus 39' pattern is an average length EBT proprietary pattern with a symmetrical design. While closely related to the EBT FreeLoader 38', this pattern has a well-defined breakpoint at the 5 board, but forces bowlers to make quicker angular adjustments as the pattern breaks down. For that reason, attack angle is crucial on this pattern as going down & in without enough speed will cause an overreaction, and going too deep without slowing down will cause an under reaction. Venus allows for various attack angles, but crankers must be especially cognizant of players to their outside pushing oil into their breakpoint. Venus will create carry down and will start feel longer than it actually is. Remember, you as the bowler are ultimately responsible for choosing the right equipment and playing the lanes as they allow you to play them! This is only a reference guide, not an answer key! Good luck!