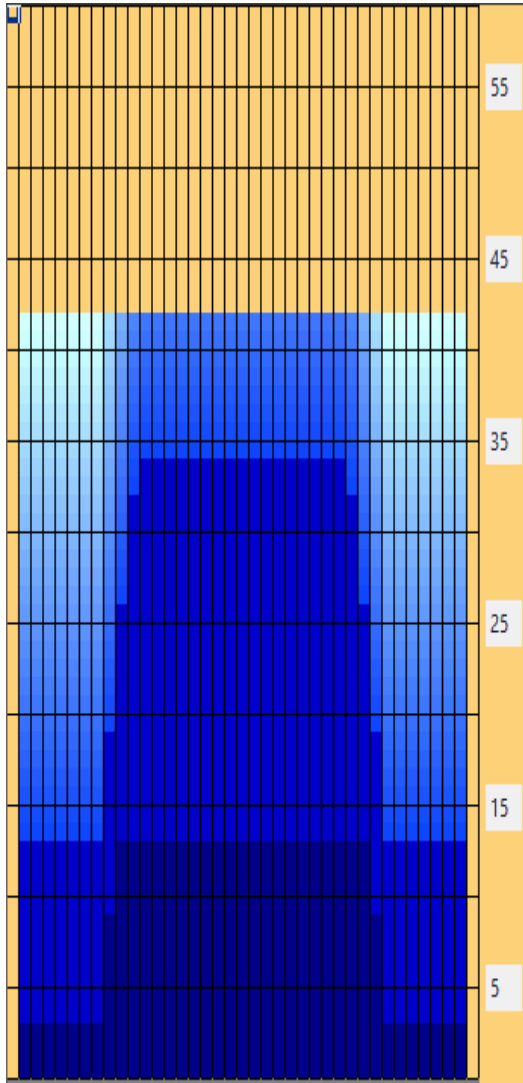




ELITE BOWLERS TOUR

Gold Digger 42'



EBT Classification: **User Pattern**

Pattern Volume: **27.85mL @ 50 μ L**

Ratio: **3.0 to 1**

Design Year: **2009**

Description: *Sport shot based on house hot design*

Characteristics: *High volume oil pattern with strong back ends*

Recommended Attack Area: *Second Arrow*

Recommended Delivery Speed: *Moderately fast*

Equipment: *Strong with sanded surface*

Scoring Potential: *Low to Medium* Difficulty: *High*

The EBT Gold Digger 42' Pattern is the oldest of the EBT proprietary patterns. At 42 feet with a top hat shape, bowlers may be tricked into believing this is a house shot. In reality, the Gold Digger is a sport shot with a house shot underlay, and it is the hardest of all other EBT patterns. The Gold Digger does allow for multiple attack lines, but the deeper the line, the more difficult the pattern plays. Be prepared to play a straighter and more direct line at first. It is also recommended that bowlers throw straight at their spares because the balls tend to labor a little longer on this pattern before they turn. The pattern will open up allowing for more ball movement, and if broken down correctly, the house shot should be more pronounced. However, like most other EBT patterns, there is additional oil in the heads and midlane to purposefully create carrydown during transition. Read what your lanes and equipment are telling you. Remember, you as the bowler are ultimately responsible for choosing the right equipment and playing the lanes as they allow you to play them! This is only a reference guide, not an answer key!